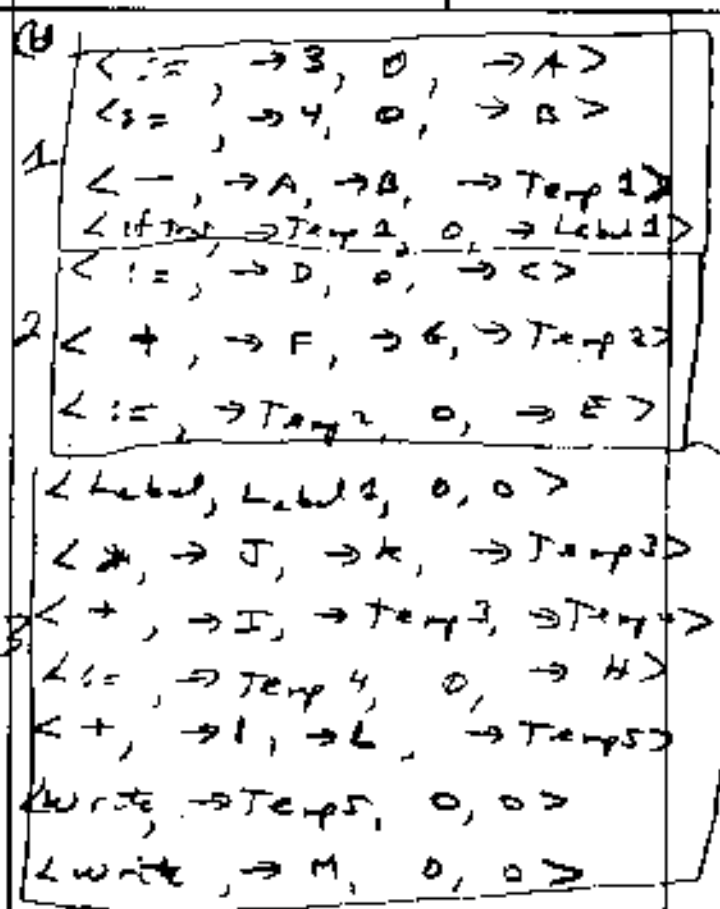


22-141 50 SHEETS
22-142 100 SHEETS
22-144 200 SHEETS



(A) Value-Result

I = 2

J = 2

B = 2

Then

I = 2

A = [2, 1, 2, 3, 4, 5]

7 (a)

VO = start address -

L1 * M1 - L2 * M2

= 2000 - 144 - 1

= 2000 - 5

= 1995

(c) 3 basic blocks given above.

b reference

I = 4

J = 4

b[A[0]] = 2

Then

I = 4

A = [2, 1, 2, 3, 4, 5]

(c) Value

I = 2

J = 2

B = 2

Then

I = 2

A = [0, 1, 2, 3, 4, 5]

(c) Address

I = 4

J = 4

b[A[4]] = 5

Then I = 4, A = [0, 1, 3, 3, 5, 5]

(b) Display is sequence of all activation records in the static scope of a program. It is needed for languages with nested scopes. Either displays or static links are needed.

(c) all contribute to the speed of a RISC processor