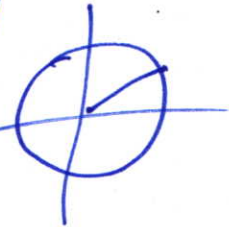
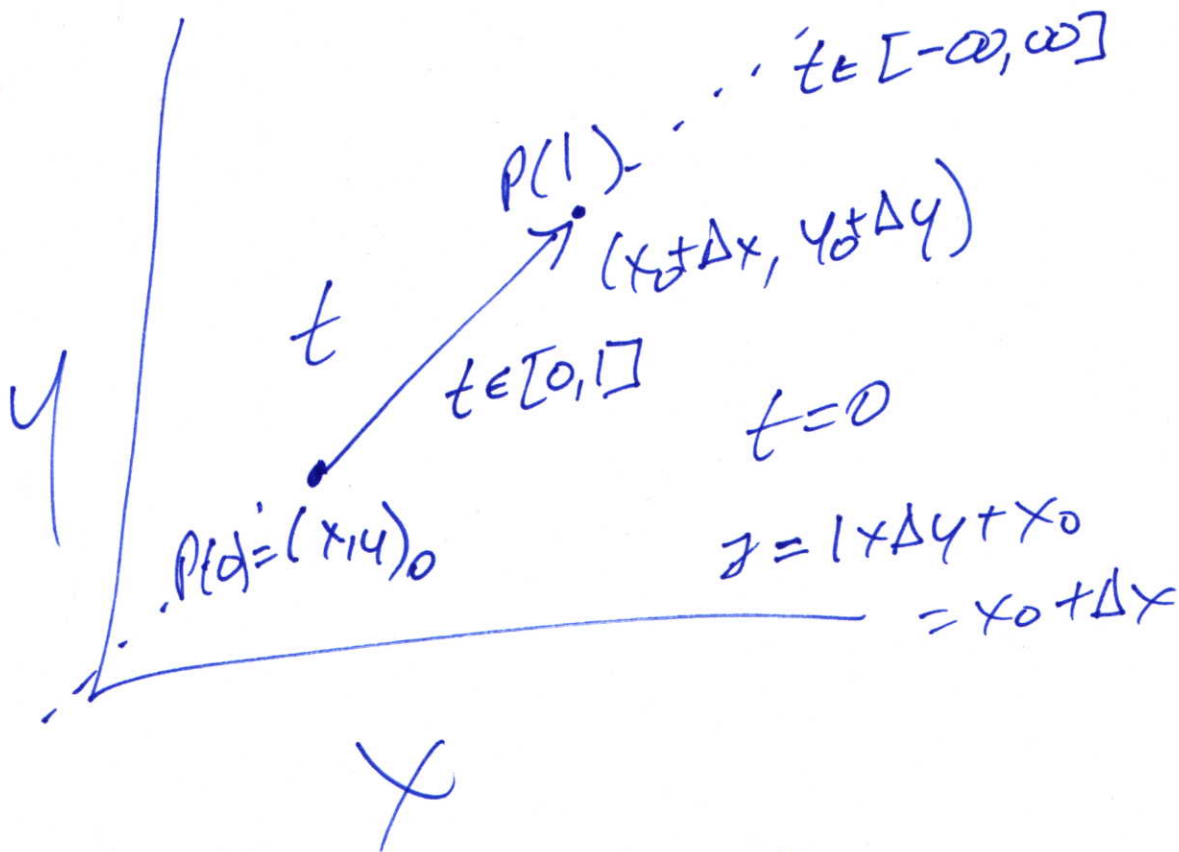


implicit

$$\begin{aligned}x^2 + y^2 &= R^2 \\ y &= mx + b\end{aligned}$$

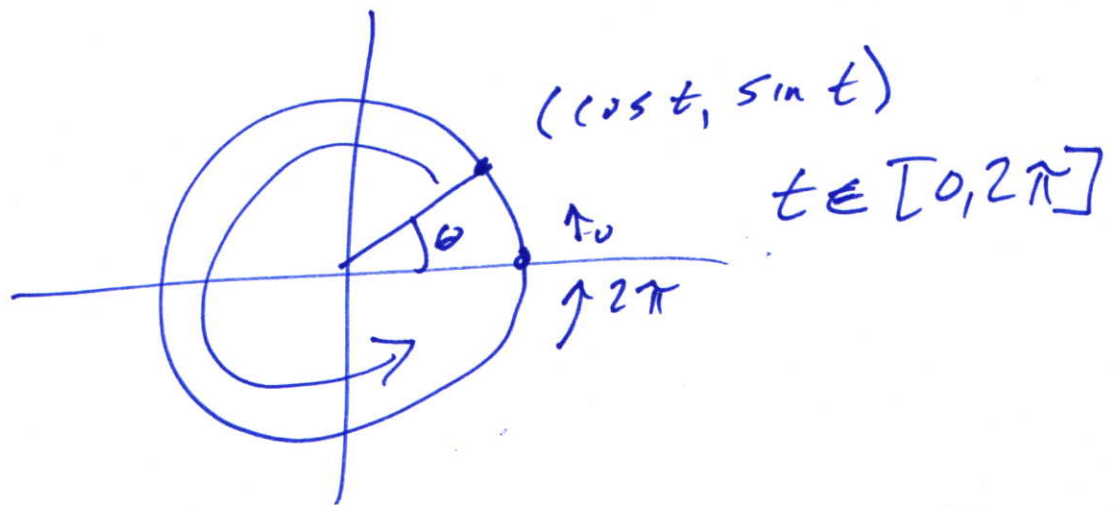


2, 3 ∈ \mathcal{O} ?



parametric equations

$$\begin{aligned}P(t) \quad x &= t \Delta x + x_0 \\ y &= t \Delta y + y_0\end{aligned}$$



$$\vec{P}(t) = R \langle \cos t, \sin t \rangle \quad [0, 2\pi]$$

$$\vec{P}'(t) = R \langle \cos 2\pi t, \sin 2\pi t \rangle \quad [0, 1]$$